

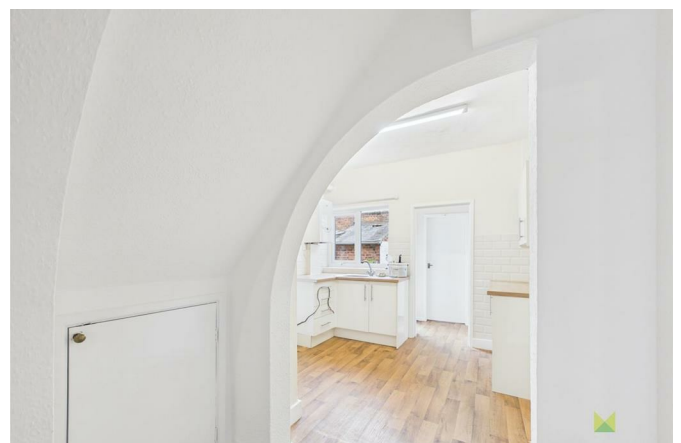
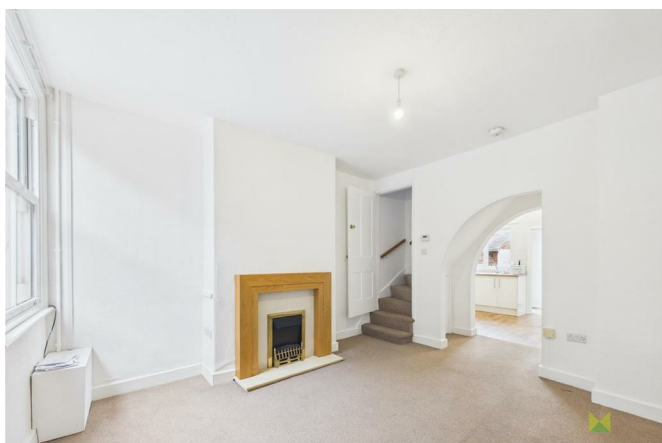
12 Mill Street Wem SY4 5ED



2 Bedroom House - Terraced
£750 PCM

The features

- ENVIABLE LOCATION CLOSE TO AMENITIES
- GOOD SIZED LOUNGE, KITCHEN/DINING ROOM
- GAS CENTRAL HEATING AND DOUBLE GLAZING
- VIEWING RECOMMENDED
- PERIOD TWO BEDROOM TOWN HOUSE
- 2 GENEROUS DOUBLE BEDROOMS AND BATHROOM
- ENCLOSED SMALL COURTYARD STYLE GARDEN WITH STORE
- EPC RATING TBC



***** CHARMING PERIOD TOWN HOUSE *****

A period 2 double bedroom Town House.

Occupying an enviable position in the heart of the Town, ideally placed for a range of local amenities including shops, schools, recreational facilities and being a short stroll from the Railway station with links to Shrewsbury, Crewe and London.

The accommodation briefly comprises good sized Lounge, Kitchen/Dining Room, 2 generous double Bedrooms and Bathroom.

The property has the benefit of gas central heating, double glazing and enclosed small courtyard style garden with store.

Viewing recommended.

Property details

LOCATION

Occupying an enviable position in the heart of the Town, ideally placed for a range of local amenities including shops, schools, recreational facilities and being a short stroll from the Railway station with links to Shrewsbury, Crewe and London.

LOUNGE

having sash window to the front, wooden fire surround housing living flame gas fire, media point, radiator. Archway with opening through to

KITCHEN

recently fitted with range of white fronted high gloss units incorporating single drainer sink with mixer taps set into base cupboard. Further range of cupboards and drawers with work surfaces over and having space for range of appliances. Eye level wall units, wall mounted gas boiler, wooden floor covering, radiator. Window overlooking the rear.

Rear Entrance area with door to garden and

BATHROOM

with suite comprising panelled bath with mixer taps/shower, wash hand basin and WC. Complementary tiled surrounds, radiator, window to the rear.

FIRST FLOOR LANDING

Enclosed staircase from the Lounge leads to the First Floor off which lead

BEDROOM

A large double room with sash window to the front, fitted double wardrobe, radiator.

BEDROOM

Another generous double room with window to the rear, radiator.

OUTSIDE

To the rear is an enclosed small courtyard style garden area which catches the afternoon and evening sun - brick built store.

12 Mill Street, Wem, SY4 5ED.

2 Bedroom House - Terraced
£750 PCM





Judy Bourne

Director at Monks
judy@monks.co.uk

Get in touch

Call. 01743 361422
Email. info@monks.co.uk
Click. www.monks.co.uk

Shrewsbury office

10a-11 Shoplatch,
Shrewsbury, Shropshire, SY1

We're available 7 days a week

HOME – four words that define who,
and what we are:

Honest, Original, Motivated, Empathetic

Energy Efficiency Rating		
	Current	Potential
Very energy efficient - lower running costs		
(92 plus) A		
(81-91) B		
(69-80) C		
(55-68) D		
(39-54) E		
(21-38) F		
(1-20) G		
Not energy efficient - higher running costs		
England & Wales	EU Directive 2002/91/EC	

Environmental Impact (CO ₂) Rating		
	Current	Potential
Very environmentally friendly - lower CO ₂ emissions		
(92 plus) A		
(81-91) B		
(69-80) C		
(55-68) D		
(39-54) E		
(21-38) F		
(1-20) G		
Not environmentally friendly - higher CO ₂ emissions		
England & Wales	EU Directive 2002/91/EC	

Monks for themselves and for the vendors of this property, whose agents they are give notice that:

- These particulars provide a general outline only for the guidance of intended purchasers and do not constitute part of an offer or contract.
- All descriptions, dimensions and distances are approximate, references to state and condition, relevant permissions for use and occupation and other details are provided in good faith and believed to be correct.
- No person in the employment of Monks has any authority to make or give any representation or warranty whatever in relation to this property.
- Electrics and other appliances mentioned in these particulars have not been tested by Monks. Therefore prospective purchasers must satisfy themselves as to their working order.